

R N I B

See differently



**Information for
your patients**



Helping you to support patients with sight loss

Whether your patients have a diagnosed eye condition or are struggling with their vision pre-diagnosis, we can help you to support them.

We offer practical and emotional support to anyone affected by sight loss, including families and carers.

Ways you can help

You can:

- Show empathy and be clear about where they can get more information.
- Complete a simple and secure online referral form ([rnib.in/ReferralServicesForm](https://www.rnib.in/ReferralServicesForm)) to give your patients access to immediate help and guidance from skilled representatives at RNIB.
- Share our free resources below about eye conditions and the support available with your patients who are affected.

Patient information booklets

Our series of resource guides cover a range of eye conditions, advice about benefits, emotional support, plus advice and tips on day to day living.

Below is a selection of our most popular editions. They are available to download and to order in print, audio and braille. Why not download or order them for your practice to have them immediately to hand?



How we can help

At RNIB, we recognise everyone's unique experience of sight loss and offer help and support – this can be anything from practical and emotional support, campaigning for change, Talking Books and the products we offer in our online shop. Find out more about the services we offer people with sight loss, how to get in touch and other sources of information.



- Download accessible PDF (rnib.in/HowWeCanHelpPDF)
- Download in Word (no images: rnib.in/HowWeCanHelpDoc)
- Order print, audio or braille from RNIB Shop (rnib.in/HowWeCanHelp)

Understanding Cataracts

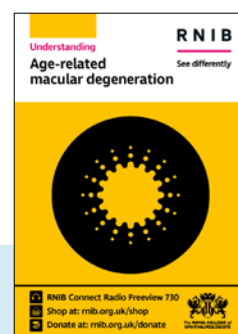
Explains the causes and symptoms of cataracts, cataract removal surgery and coping strategies for anyone affected by cataracts.



- Download accessible PDF (rnib.in/CataractsPDF)
- Download in Word (no images: rnib.in/CataractsDoc)
- Order print, audio or braille from RNIB Shop (rnib.in/CataractsOrder)

Understanding Age-related Macular Degeneration

Explains the causes, symptoms, types of age-related macular degeneration (AMD), changes in vision, the eye examination for AMD and coping strategies for anyone affected by AMD.



- Download accessible PDF (rnib.in/AMD_PDF)
- Download in Word (no images: rnib.in/AMD_Doc)
- Order print, audio or braille from RNIB Shop (rnib.in/AMD_Order)

Understanding Glaucoma

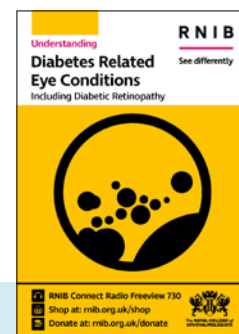
Explains the different types of glaucoma, risk factors, treatment and management options.



- Download accessible PDF (rnib.in/GlaucomaPDF)
- Download in Word (no images: rnib.in/GlaucomaDoc)
- Order print, audio or braille from RNIB Shop (rnib.in/GlaucomaOrder)

Understanding eye conditions related to diabetes

Explains how diabetes can affect the eye, how to reduce the risk of this happening and treatments for diabetic retinopathy, macular oedema and advanced diabetic retinopathy.



- Download accessible PDF (rnib.in/DiabetesPDF)
- Download in Word (no images: rnib.in/DiabetesDoc)
- Order print, audio or braille from RNIB Shop (rnib.in/DiabetesOrder)

Understanding Posterior Vitreous Detachment

Explains the causes, symptoms and diagnosis other related eye conditions and coping strategies for anyone affected by Posterior Vitreous Detachment (PVD).



- Download accessible PDF (rnib.in/PVD_PDF)
- Download in Word (no images: rnib.in/PVD_Doc)
- Order print, audio or braille from RNIB Shop (rnib.in/PVD_Order)

Understanding Dry Eye

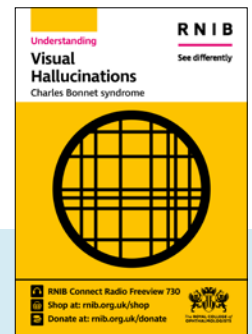
Explains the causes, diagnosis, treatment and coping strategies for anyone affected by Dry Eye.



- Download accessible PDF (rnib.in/DryEyePDF)
- Download in Word (no images: rnib.in/DryEyeDoc)
- Order print, audio or braille from RNIB Shop (rnib.in/DryEyeOrder)

Understanding Visual Hallucinations (Charles Bonnet Syndrome)

Explains the symptoms of Charles Bonnet Syndrome (CBS), how to know if you have it, the types of hallucinations it causes and coping strategies for anyone affected by the condition.



- Download accessible PDF (rnib.in/CBS_PDF)
- Download in Word (no images: rnib.in/CBS_Doc)
- Order print, audio or braille from RNIB Shop (rnib.in/CBS_Order)

Making the most of your sight

This booklet contains tips and ideas for anyone experiencing sight loss on how to make the most of their sight and how to protect their remaining sight. It also contains an overview of products that can help maintain independence for anyone with low vision.



- Download accessible PDF (rnib.in/MakingMostSightPDF)
- Download in Word (no images: rnib.in/MakingMostSightDoc)
- Order print, audio or braille from RNIB Shop (rnib.in/MakingMostSightOrder)

Emotional Support

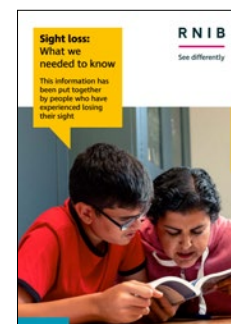
This booklet is about recognising and dealing with the feelings and emotions that can come from experiencing sight loss. It contains suggestions about counselling, emotional and peer support and befriending services and how to access this help.



- Download accessible PDF (rnib.in/EmoteSupportPDF)
- Download in Word (no images: rnib.in/EmoteSupportDoc)
- Order print, audio or braille from RNIB Shop (rnib.in/EmoteSupportOrder)

Sight loss: what we needed to know

This booklet shares information and advice put together by people living with sight loss who are at different stages of their sight loss journey. It includes quotes about experiences, top tips on coping with sight loss and more.



- Download accessible PDF (rnib.in/SighLossAdvicePDF)
- Download in Word (no images: rnib.in/SightLossAdviceDoc)
- Order print, audio or braille from RNIB Shop (rnib.in/SightLossAdviceOrder)



Find out more

Find the full range of our publications at rnib.in/PublicationsHub or by calling our Helpline on **0303 123 9999**.

In addition to our 10 booklets in the “Understanding” series about various eye conditions, we offer wide ranging patient information and advice on our website and Word factsheets. This includes:

- **Eye conditions A to Z (rnib.in/EyeConditionsA-Z)**
- **Posterior capsule opacification (rnib.in/PostCapOpac)**
- **Patient information about stroke-related eye conditions (rnib.in/StrokeRelatedEyeCons).**

For further information about RNIB and referral procedures, email: [**eyecare.professionals@rnib.org.uk**](mailto:eyecare.professionals@rnib.org.uk)

